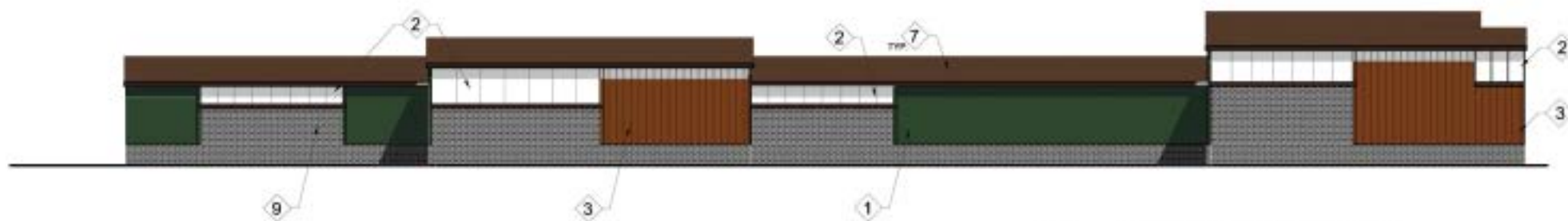




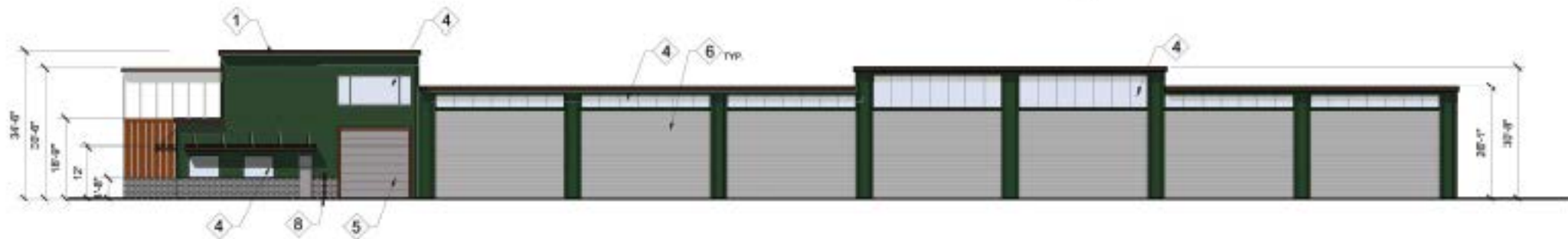
4 EAST EXTERIOR ELEVATION
1/16" = 1' - 0"



3 WEST EXTERIOR ELEVATION
1/16" = 1' - 0"



2 NORTH EXTERIOR ELEVATION
1/16" = 1' - 0"



1 SOUTH EXTERIOR ELEVATION
1/16" = 1' - 0"